

30
double-sided
adhesive tape

40
adhesive tape kapton

10
LP103740

60
wire black (-)
26AWG UL1571

50
wire red (+)
26AWG UL1571

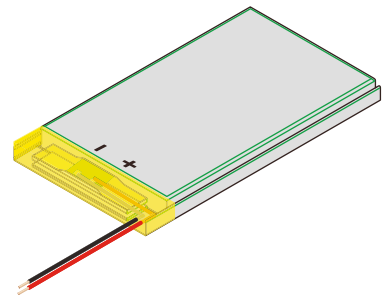
40
adhesive tape
kapton (2x)

10.0^{+0.3}
-0.3

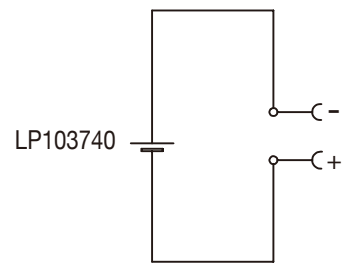
37^{+0.5}
-0.5

40^{+1.0}
-1.0

50^{+3.0}
-3.0



Circuit diagram



Specification

Lithium Polymer Battery Pack LP103740 1580mAh 3.7V without Protection Circuit Module (PCM)
This data sheet describes the requirements and properties of lithium polymer rechargeable battery pack manufactured by LiPol Battery Co., Ltd - China

Mechanical Characteristics

- Cell ▶ LP103740
- PCM ▶ Yes
- NTC ▶ No
- Configuration ▶ 1S1P
- Weight ▶ appr. 36g

Electrical Specification

- Rated Capacity ▶ 1580mAh min, 1600mAh typ.
- Nominal Voltage ▶ 3.7V
- Wat-Hour Rating ▶ 5.85Wh
- Max. Operating Voltage Range ▶ 2.75V to 4.20V
- Max. Charge Voltage ▶ 4.2V ± 50mV
- Max. Charge Current ▶ 790mA
- Max. Continuous Discharge Current ▶ 1580mA
- Discharge Cut Off ▶ 2.75V
- Internal Impedance ▶ <200mΩ
- Expected Cycle Life @ (0.5C/0.5C) @ 23±5°C ▶ 500 cycles ≥ 80%

Cell Protection

- Overcharge Detection ▶ 4.275 ±50mV (0.7 to 1.3sec. delay, release 4.275V ±50mV)
- Overdischarge Detection ▶ 2.75V ±50mV (14 to 26msec. delay, resume 2.50V ±50mV)
- Overcurrent Detection ▶ 2A to 2.5A (8 to 16msec. delay)

Ambient Conditions

- Charge Temp. Range ▶ 0 to +45°C
- Discharge Temp. Range ▶ -20 to +60°C
- Storage Temp. Range ▶ 1 year at -20 to +30°C >70%
- ▶ 3 months at -20 to +45°C >70%
- ▶ 1 month at -20 to +60°C >70%
- Humidity ▶ 65 ±20%RH

Environmental and Safety

Please follow LiPol Handling and Safety Precautions for Lithium Polymer Battery. This battery meets the requirements of Battery Directives, and the battery parts are IEC 62133 & RoHS-Compliant. For more safety precautions and performance standards, please go to www.lipolbattery.com/support.html

Mae in mm All dimensions in mm	Freimatoleranzen Generaltoleranzen	Date	Name	LiPol Battery	Index
Als Betriebsgeheimnis anvertraut, alle Rechte vorbehalten	up to 6 · 0,1 over 6 up to 30 · 0,2	Erst. / Orig 26.01.2019	Xie Qingfang		
Proprietary data, company confidential, all rights reserved.	over 30 up to 100 · 0,3 over 100 · 0,5	Benennung/ Designation LP103740		Zchgng. / Dwg. Nr. 3 FD_1250_10	
		Origin: support@lipolbattery.com		www.LiPolBattery.com	