

# Specification

Lithium Polymer Battery Pack LP603450 1100mAh 3.7V with Protection Circuit Module (PCM)  
 This data sheet describes the requirements and properties of lithium polymer rechargeable battery pack manufactured by LiPol Battery Co., Ltd - China

## Mechanical Characteristics

Cell	▶ LP603450
PCM	▶ Yes
NTC	▶ No
Configuration	▶ 1S1P
Weight	▶ appr 20g

## Electrical Specification

Rated Capacity	▶ 1100mAh min, 1125mAh typ.
Nominal Voltage	▶ 3.7V
Wat-Hour Rating	▶ 3.15Wh
Max. Operating Voltage Range	▶ 2.75V to 4.20V
Max. Charge Voltage	▶ 4.2V ±50mV
Max. Charge Current	▶ 550mA
Max. Continuous Discharge Current	▶ 1100mA
Discharge Cut Off	▶ 2.75V
Internal Impedance	▶ <200mΩ
Expected Cycle Life @ (0.5C/0.5C) @ 23±5°C	▶ 500 cycles ≥ 80%

## Cell Protection

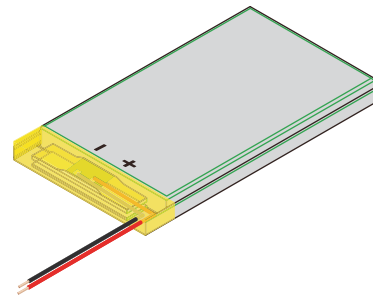
Overcharge Detection	▶ 4.275 ±50mV (0.7 to 1.3sec. delay, release 4.275V ±50mV)
Overdischarge Detection	▶ 2.75V ±50mV (14 to 26msec. delay, resume 2.50V ±50mV)
Overcurrent Detection	▶ 2A to 4.5A (8 to 16msec. delay)

## Ambient Conditions

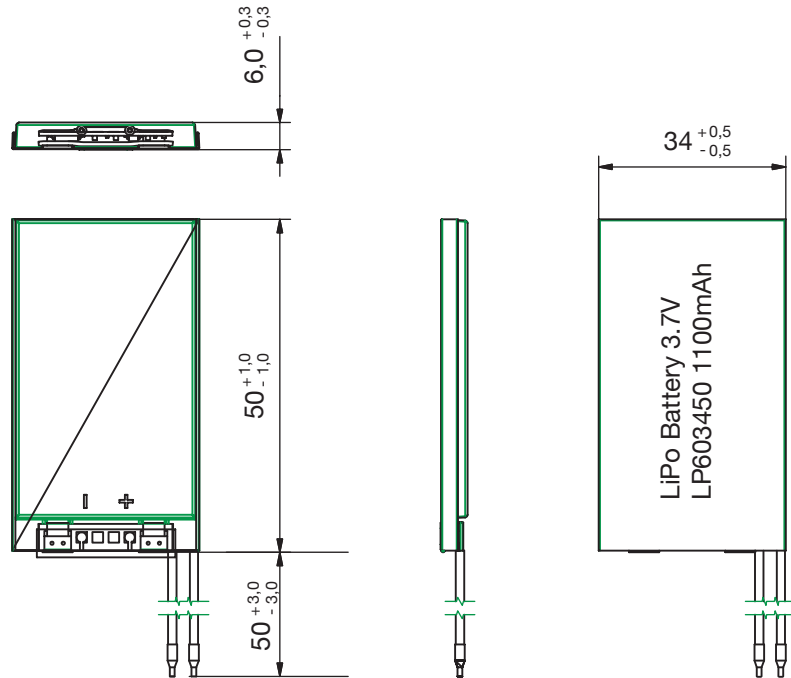
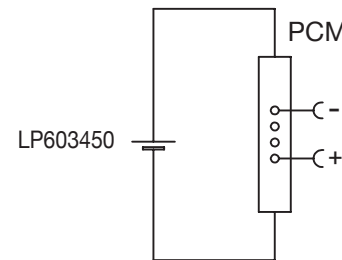
Charge Temp. Range	▶ 0 to +45°C
Discharge Temp. Range	▶ -20 to +60°C
Storage Temp. Range	▶ 1 year at -20 to +30°C >70%
	▶ 3 months at -20 to +45°C >70%
	▶ 1 month at -20 to +60°C >70%
Humidity	▶ 65 ±20%RH

## Environmental and Safety

Please follow LiPol Handling and Safety Precautions for Lithium Polymer Battery. This battery meets the requirements of Battery Directives, and the battery parts are IEC 62133 & RoHS-Compliant. For more safety precautions and performance standards, please go to [www.lipolbattery.com/support.html](http://www.lipolbattery.com/support.html)



Circuit Diagram



Mae in mm All dimensions in mm	Freimatoleranzen Generaltoleranzen	Date 01.01.2018	Name Xie Qingfang	<b>LiPol Battery</b>	Index
Als Betriebsgeheimnis anvertraut, alle Rechte vorbehalten	up to 6 · 0,1 over 6 up to 30 · 0,2	Erst. / Orig 01.01.2018	Gepr./check 01.01.2018		
Proprietary data, company confidential, all rights reserved.	over 30 up to 100 · 0,3 over 100 · 0,5	Benennung/ Designation LP603450		Zchgng. / Dwg. Nr. 3 FD_3255_70	
		Origin: support@lipolbattery.com		www.LiPolBattery.com	